

GUSTAV  
BACINGER

1

1 3 4

RAINBROJWA

SUMA

1 7

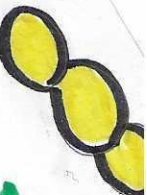
3 2

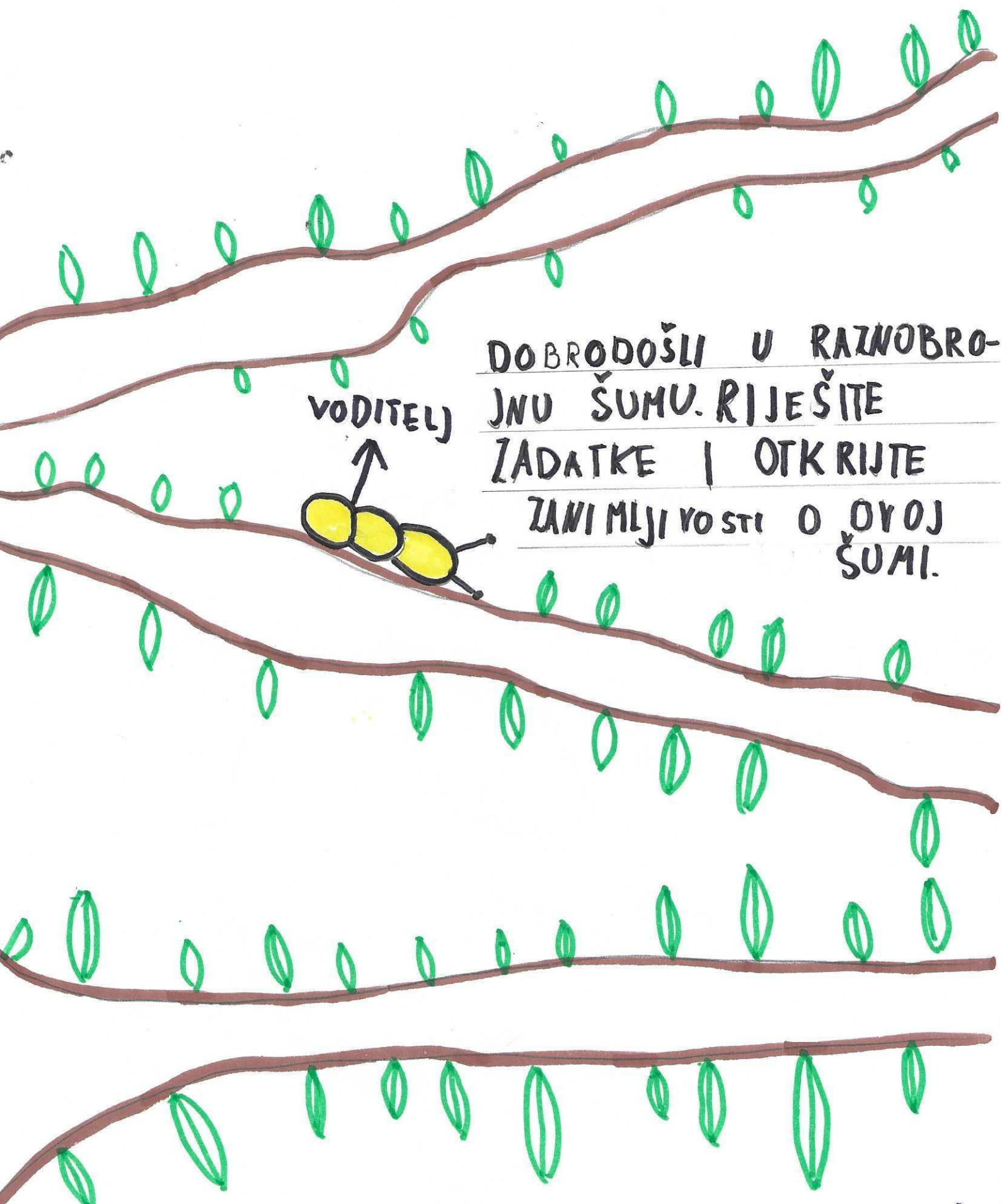
7

8

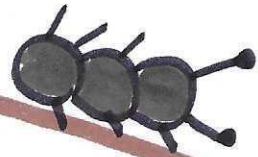
3

70

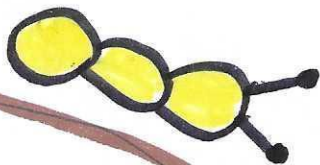
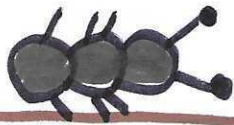
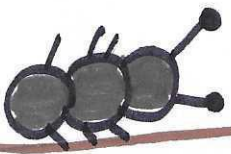


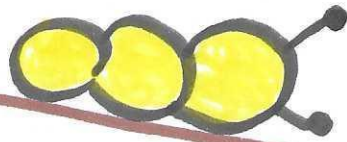


DOBRODOŠLI U RAZNOBRO-  
JNU ŠUMU. RIJEŠITE  
ZADATKE I OTKRIJTE  
ZANIMLJIVOSTI O OVOJ  
ŠUMI.



$$3581 \cdot 33 =$$

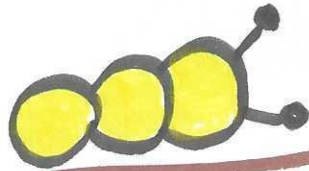





ODGOVOR JE: 118 173  
TOLIKO IMA I MRAVA  
U RAZNOBROJNOJ ŠUMI.



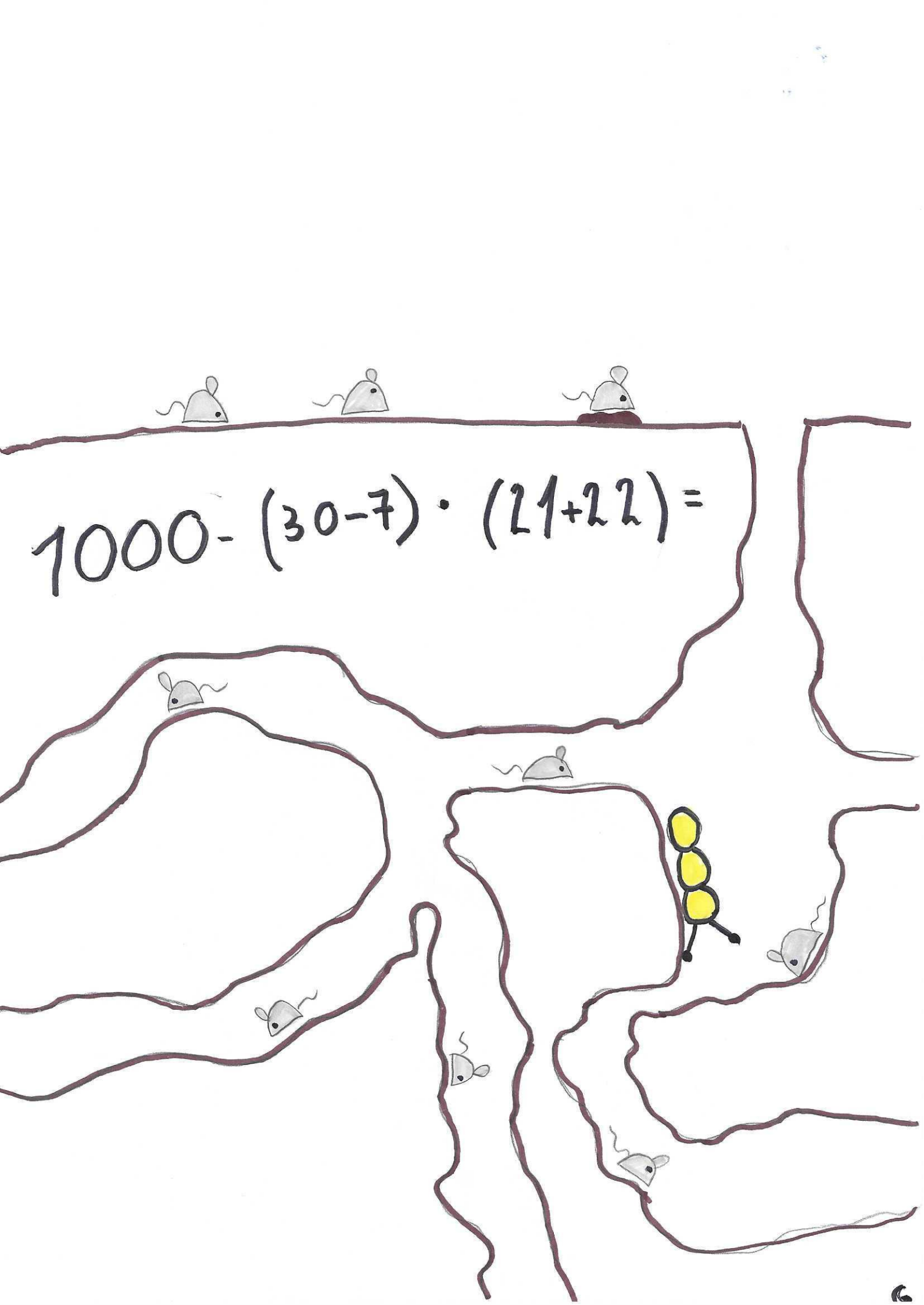
$$8625 : 23 =$$





ODGOVOR: 375  
 TOLIKO PTICA LETI  
 OVOM  ŠUMOM.

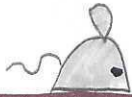


A hand-drawn maze with a yellow character and several mice. The yellow character, consisting of three stacked yellow circles and two thin legs, is positioned in the lower right quadrant of the maze. There are seven mice scattered throughout the maze, each drawn with a grey body, a small black eye, and a thin tail. The maze is drawn with dark brown, wavy lines on a white background. The equation  $1000 - (30 - 7) \cdot (21 + 22) =$  is written in the upper left area of the maze.
$$1000 - (30 - 7) \cdot (21 + 22) =$$



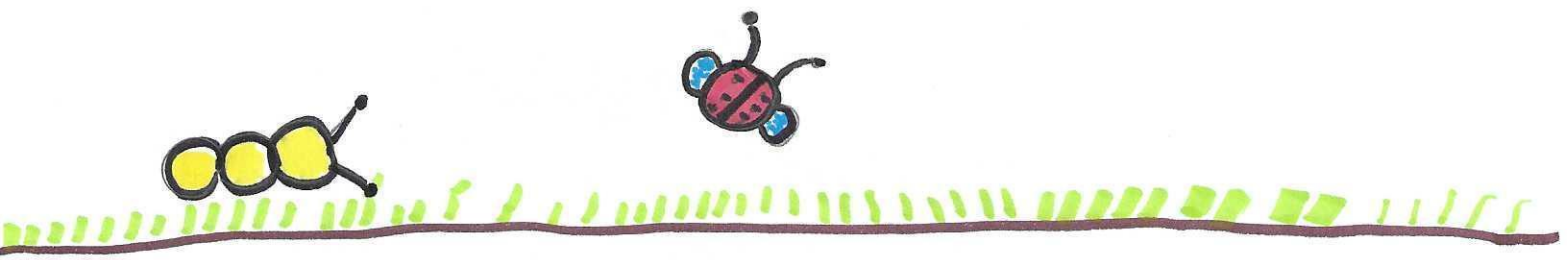
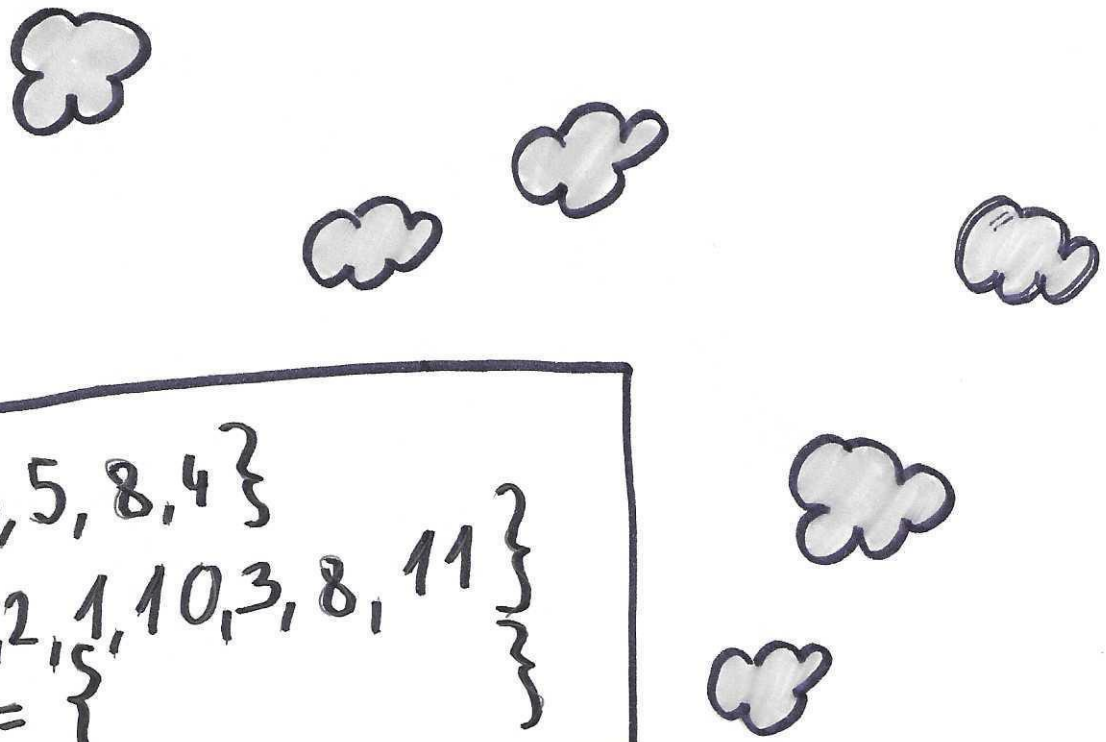
ODGOVOR: 11

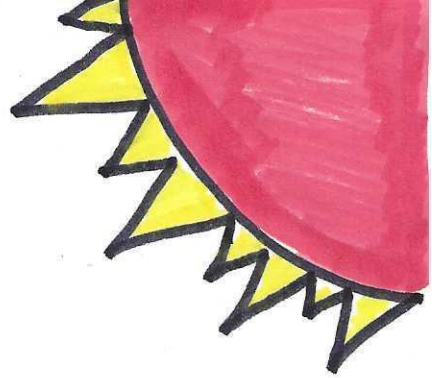
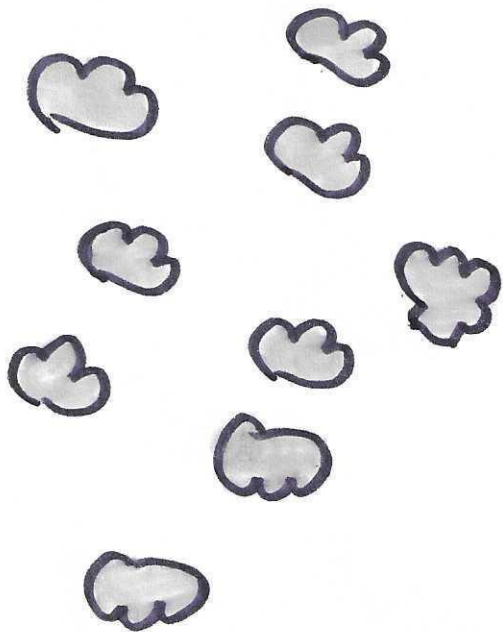
TOLIKO IMA I MIŠEVA U  
PODZEMNIM TUNELIMA.





$$A = \{3, 5, 8, 4\}$$
$$B = \{5, 2, 1, 10, 3, 8, 11\}$$
$$A \cap B = \{$$





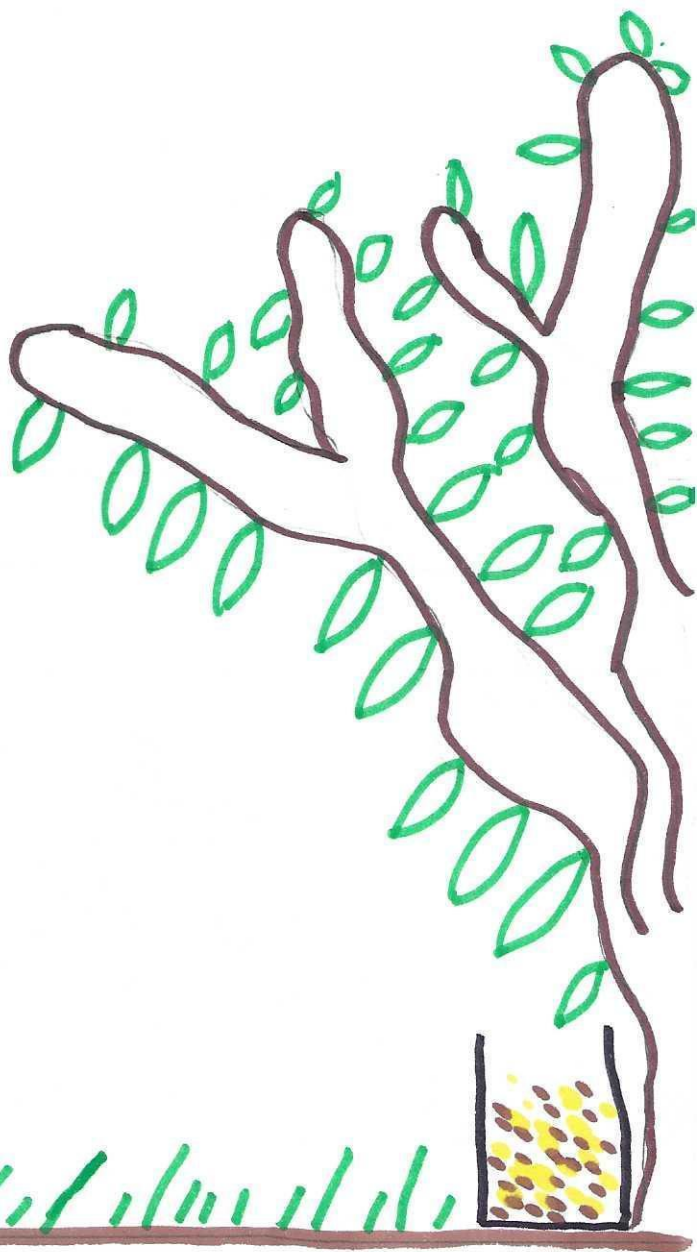
ODGOVOR: {3, 5, 8}

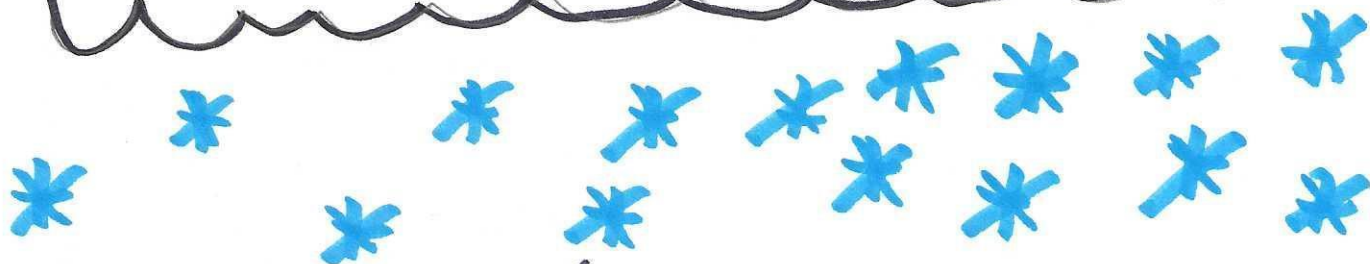
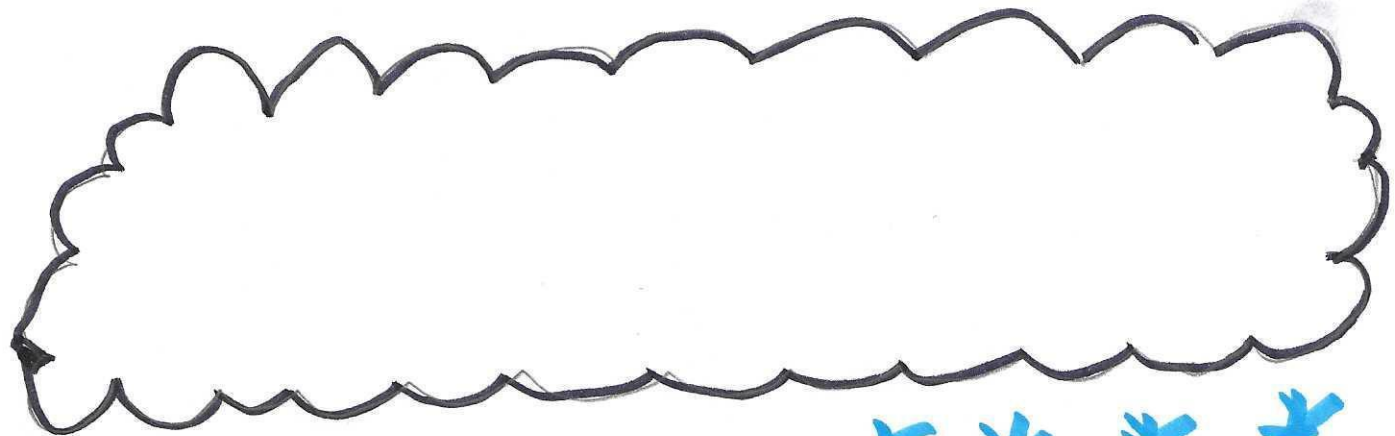
A JE KOLIKO JE DANA ZA REDOM  
PADALA KIŠA, B JE DANA ZA  
RE DOK BILO SUNCE.

$A \cup B$  JE KOLIKO JE BILO OBOJE.

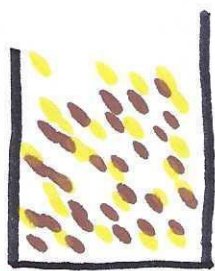
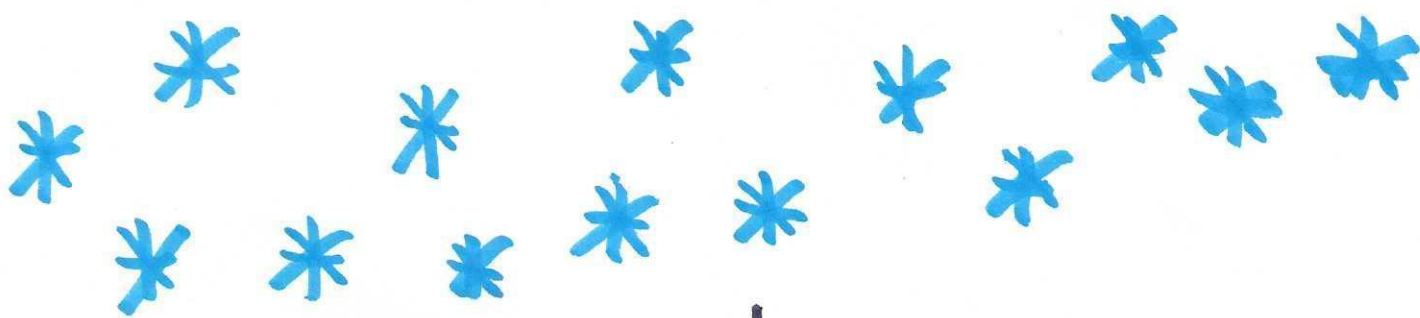


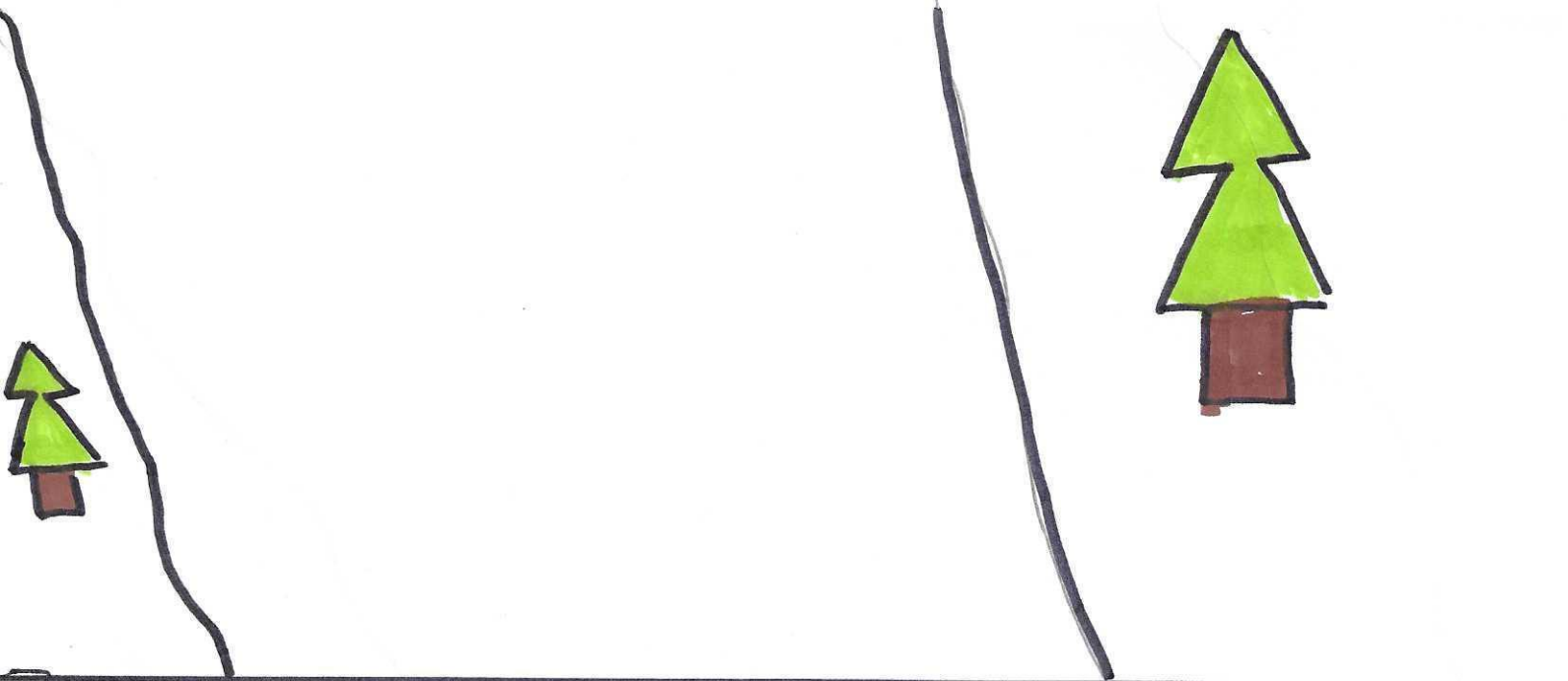
$C = \{P\check{S}ENICA, ZOB\}$   
 $D = \{SILJENO, MRKVA\}$   
 $C \cup D = \{$





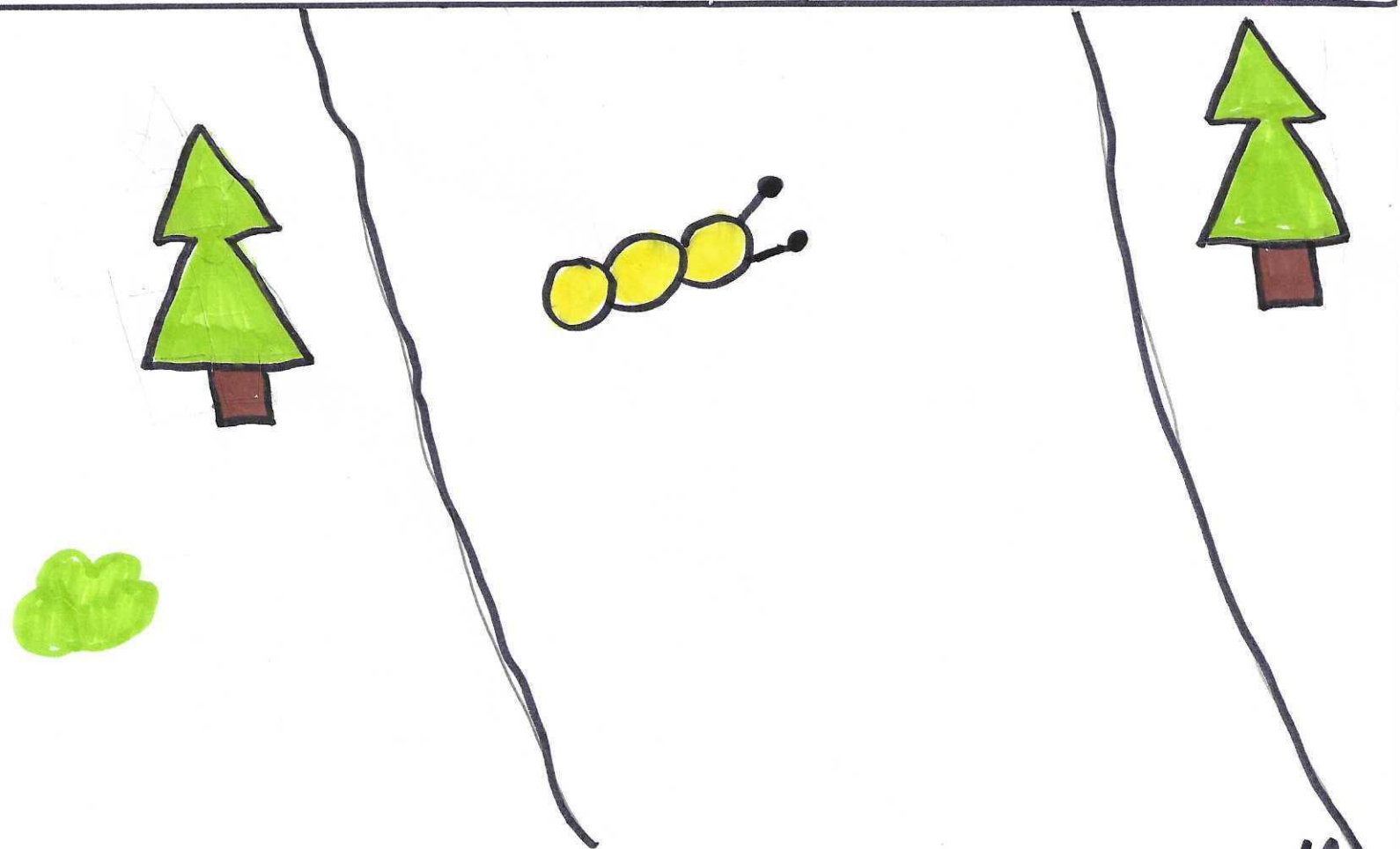
ODGOVOR = { PŠENICA, ZOB, SIJENO,  
MRKVA } C JE HRANA ZA SRNE  
D JE HRANA ZA JELENE.





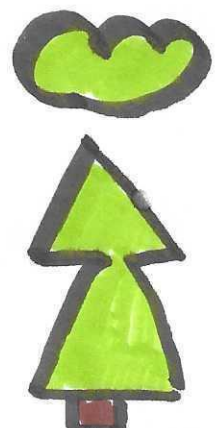
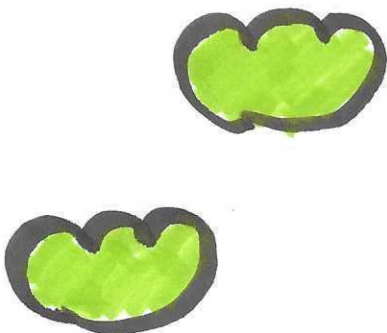
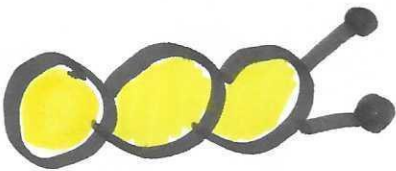
U ŠUMI SU 3 PUTA. GRADI SE  
4. KOJEM NEDOSTAJE 1 PETINA.

PRIKAŽI RAZLONOMKOM KOLIKO  
JE PUTEVA U ŠUMI.

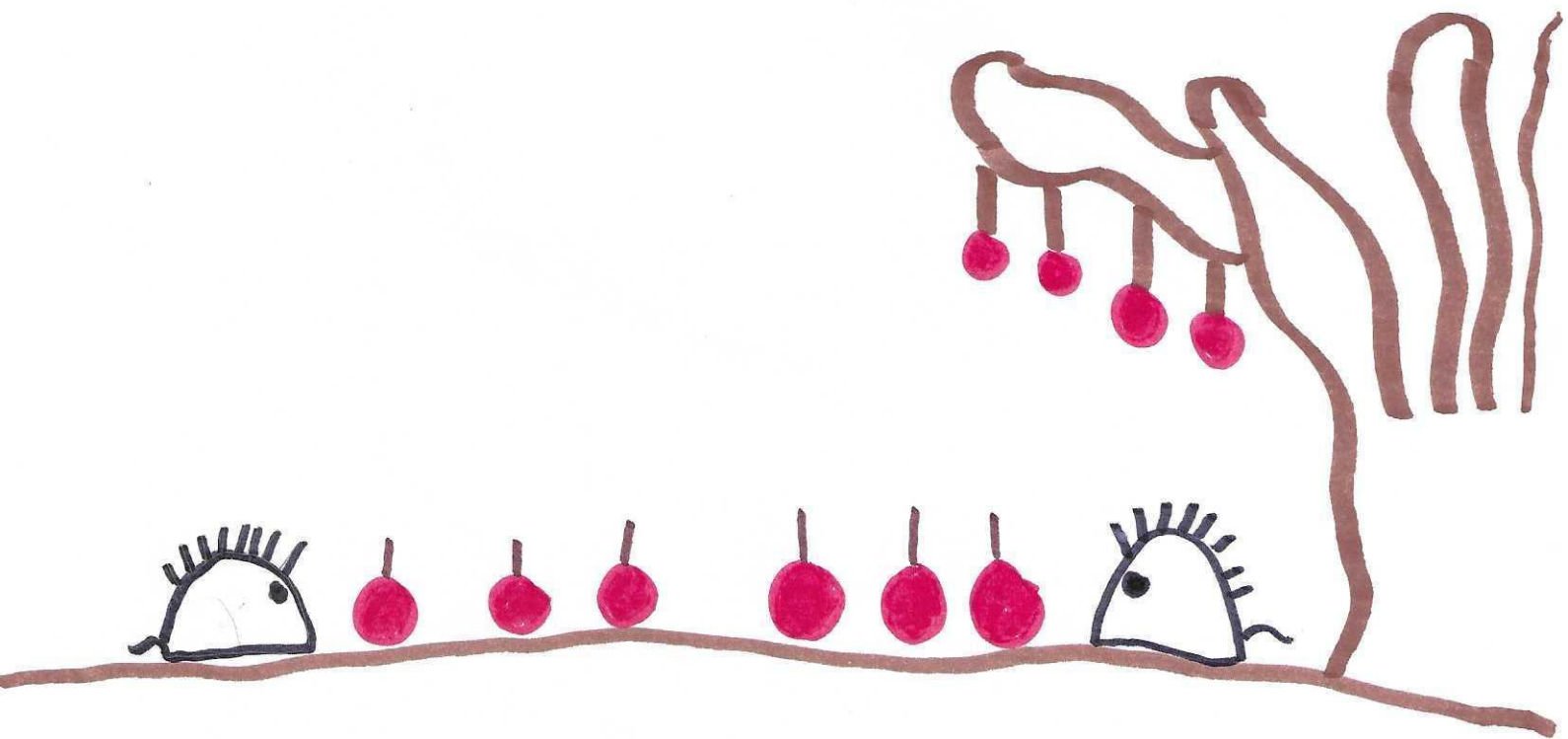


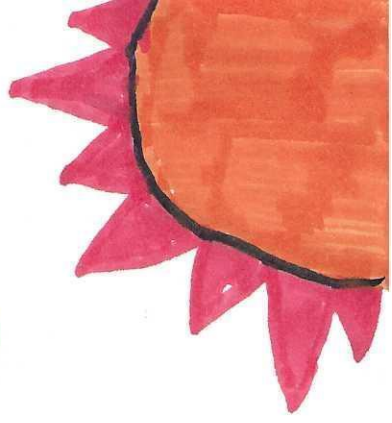


ODG OVOR:  $3\frac{4}{5}$



LJUDI SU JEŽEVIMA OSTAVILI  $\frac{25}{4}$   
 $\frac{25}{4}$  JABUKA. KOLIKO JE TO CJE LIH I  
ČETVRTINA JABUKA?  
PRIKAŽI MJEŠOVITIM BROJEM.



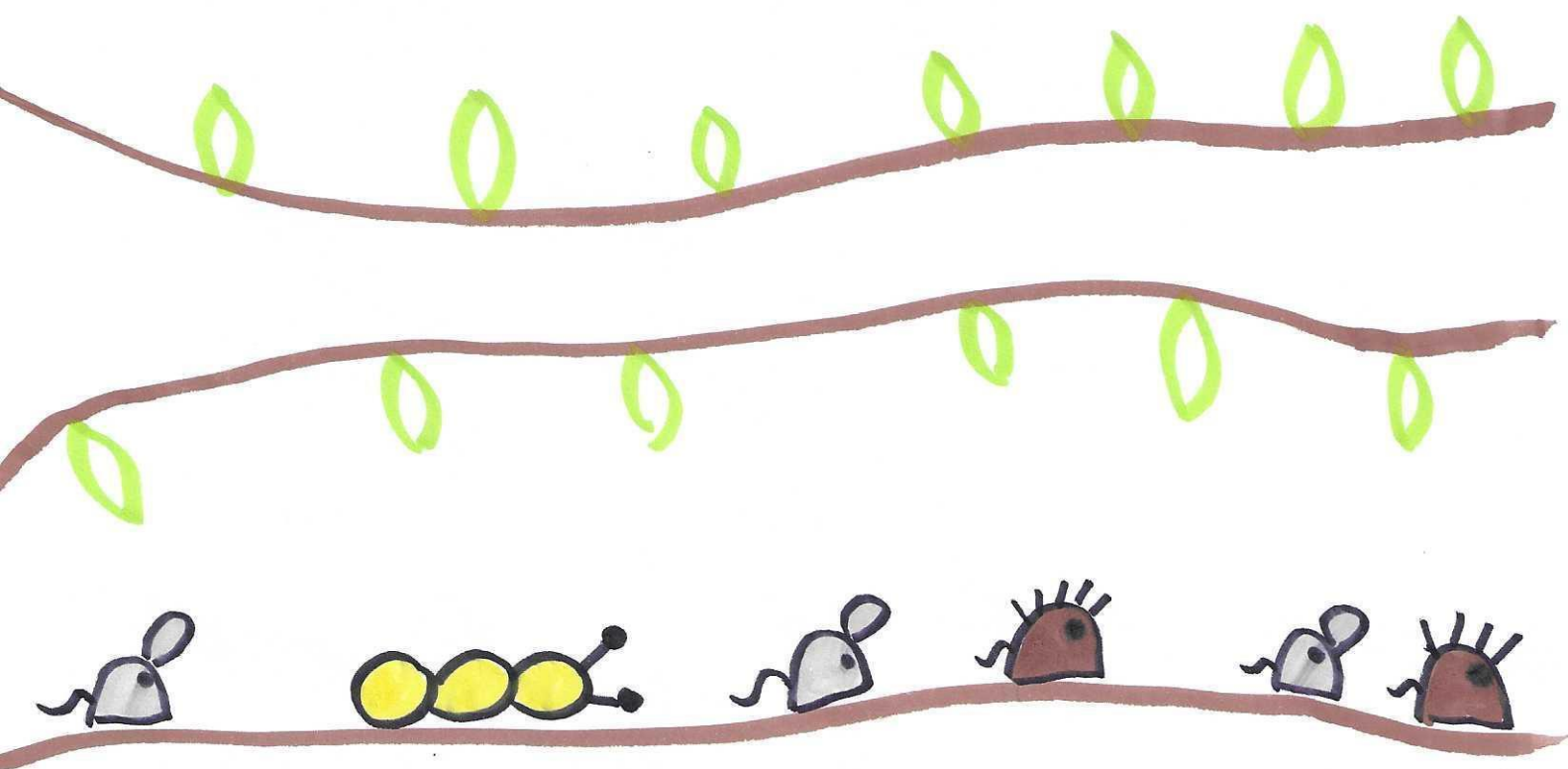


ODGOVOR:  $6 \frac{1}{4}$





U ŠUMI JE 400 VRSTA ŽIVOTINJA  
 $\frac{3}{4}$  SU KUKCI=  
 $\frac{1}{8}$  SU SISAVCI=  
OSTATAK SU OSTALE ŽIVOTINJE=



ODGOVOR:

KUKCI = 300

SISAVCI = 50

OSTALE VRSTE = 50

