

# RAZLOMCI

LUCIJA STARJAKI 6.B

$$\frac{2}{5} + \frac{3}{8}$$

$$\frac{8}{3} : \frac{3}{5}$$

$$12 + 3\frac{3}{2}$$

$$\frac{\frac{2}{3}}{1\frac{1}{2}}$$

$$8\frac{3}{5} \cdot 7\frac{6}{9}$$

$$\frac{1}{2} \cdot \frac{3}{6}$$

$$3 - 2\frac{7}{8}$$

$$\frac{\frac{4}{5}}{\frac{5}{6}}$$

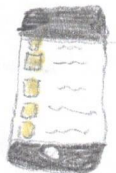
$$20\frac{6}{8} + 5\frac{3}{16}$$

$$11\frac{5}{6} : 7\frac{1}{4}$$

1. Mama je ispekla 2. tace mafine od banane. Maria je pojela  $\frac{3}{4}$  mafina a Petar  $\frac{4}{6}$ . Koliko su mafina sve skupa pojeli? Koliko je mafina ostalo za mami?



2. Manka ima puno nepotrebnih dokumenata pa ih je odlucio isbrisati. Prvog dana isbrisao je  $\frac{8}{5}$  podataka, drugog dana  $\frac{3}{8}$  podataka. Koliko je trecjeg dana isbrisao ako je sve ukupno imao  $4\frac{7}{9}$  nepotrebnih podataka?



### 3. Übung

$$a) \frac{3}{5} + \frac{8}{6} =$$

$$b) \frac{8}{4} - \frac{2}{3} =$$

$$c) \frac{6}{2} \cdot \frac{2}{1} =$$

$$d) \frac{12}{10} \cdot \frac{6}{5} =$$

$$e) \frac{\frac{8}{12}}{\frac{7}{6}} =$$

$$f) \frac{3}{10} + \frac{2}{5} =$$

$$g) \frac{9}{6} - \frac{3}{8} =$$

$$h) \frac{12}{14} \cdot \frac{4}{6} =$$

$$i) \frac{3}{6} \cdot \frac{9}{2} =$$

$$j) \frac{\frac{1}{4}}{\frac{2}{10}} =$$

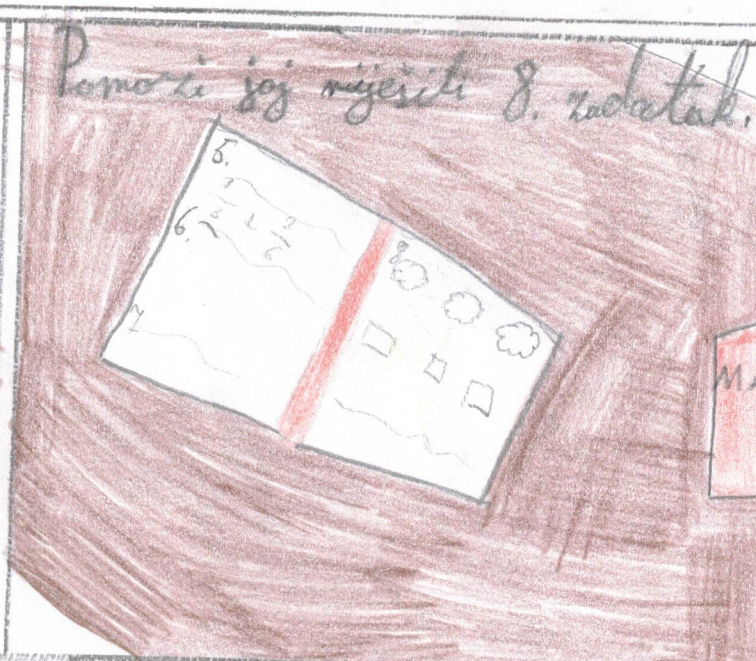
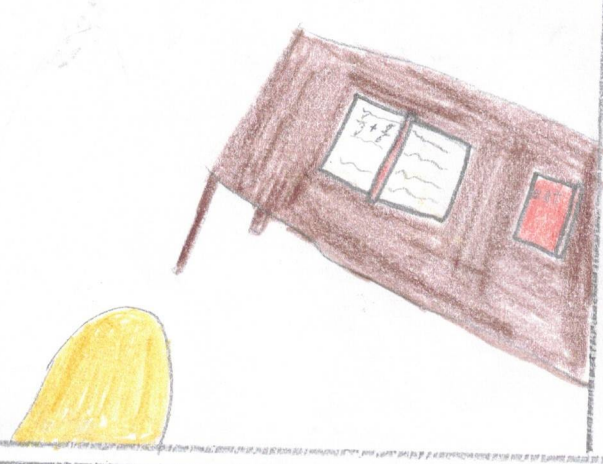
$$k) \frac{8}{14} - \frac{2}{7} =$$

$$l) \frac{12}{8} + \frac{8}{3} =$$

4.

Maja ide voditi resoluću iz matematike.

Pomoz joj riješiti 8. zadatak.



Spoje.

$$\frac{\frac{2}{8}}{\frac{5}{6}}$$

$$\frac{3}{28}$$

$$\frac{8}{12} + \frac{2}{3}$$

$$3$$

$$\frac{1}{4} \cdot \frac{14}{6}$$

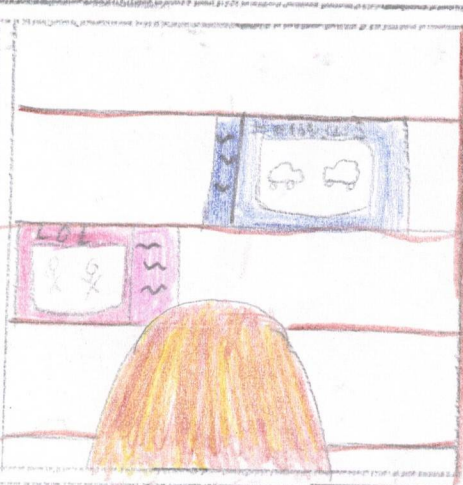
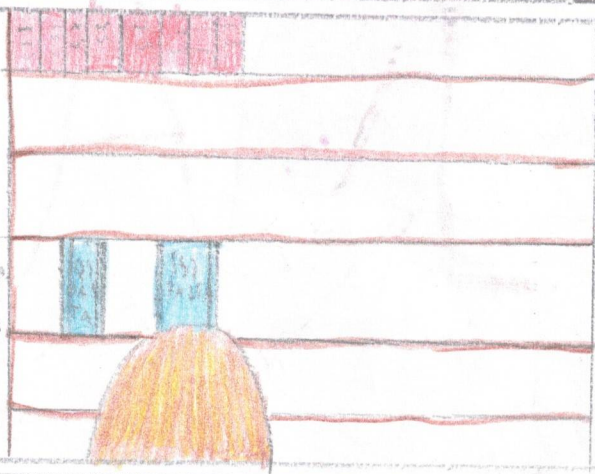
$$\frac{3}{10}$$

Mjesto na računanje:



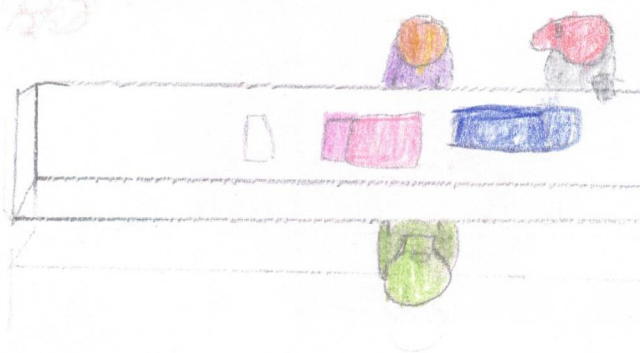
5.

Mama je bila u trgovini. Sa sobom je imala 100kn.  $\frac{3}{2}$  je potrošila na hranu.



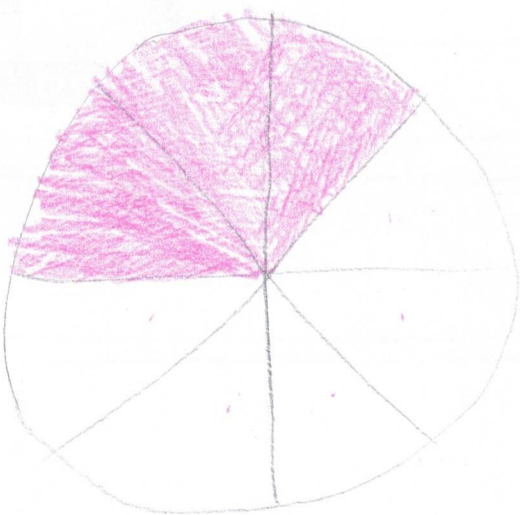
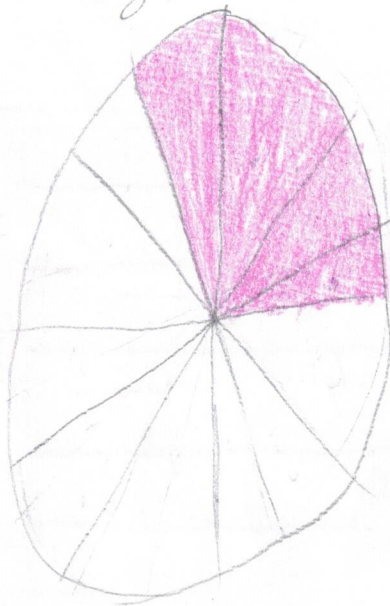
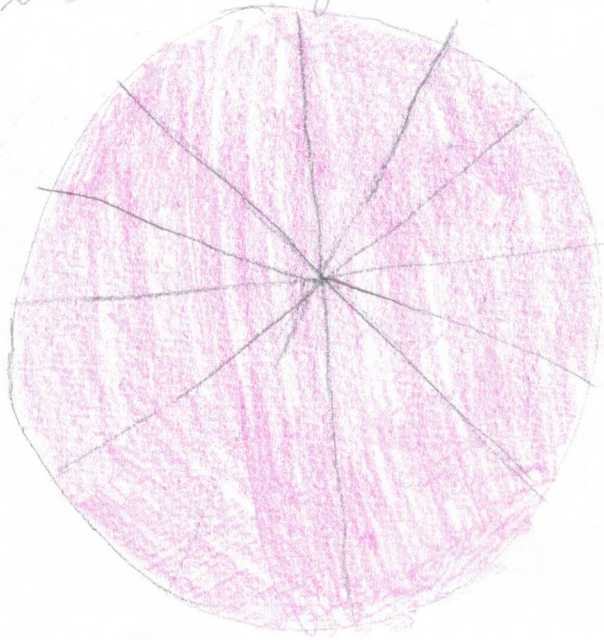
$\frac{1}{2}$  na poklone  
 $\frac{2}{2}$  djecu. Koliko joj je novaca ostalo?

*Faint, illegible handwriting.*



6.

6. *Isznoxi u krojennia i sznocunaj.*



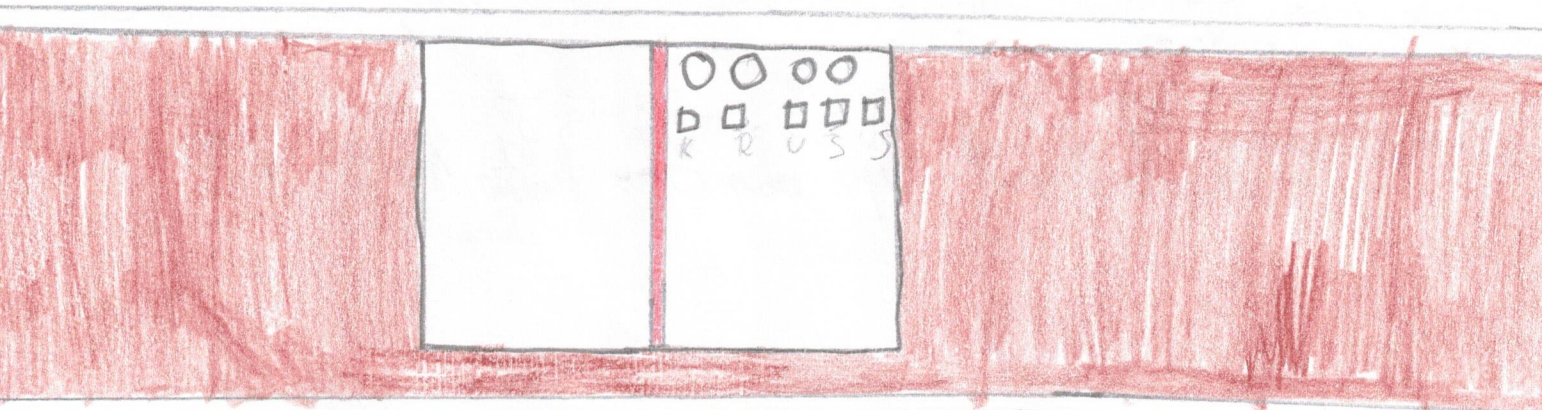
5.

Inna i. Kolje imaju čajonku, rekle su Innoj  
starijoj sestri Novu da im ode kupiti mafine i čaj od  
šumskog voća. Nova je imala 40 kn, na mafine  
je potrošila  $\frac{2}{5}$  novca a na čaj  $\frac{1}{8}$ . Koliko je novca  
ostalo? Može li kupiti čips ako čips košta 15.99 kn?





8. Molej uči na test iz matematike i treba tvoju pomoć.  
 Pokazat će sliku zadatka a ti ga riješi.



Riješi:

1. 
$$\frac{\frac{8}{6}}{\frac{5}{3}}$$

2. 
$$\frac{3}{6} + \frac{8}{12}$$

3.  $\frac{4}{1}, \frac{3}{8}$

4.  $\frac{1}{2} : \frac{8}{3}$

5.  $\frac{8}{6} - \frac{2}{3}$

$1\frac{1}{2}$

K

$\frac{3}{16}$

R

$\frac{4}{5}$

U

$\frac{1}{3}$

S

$1\frac{1}{6}$

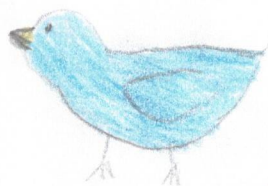
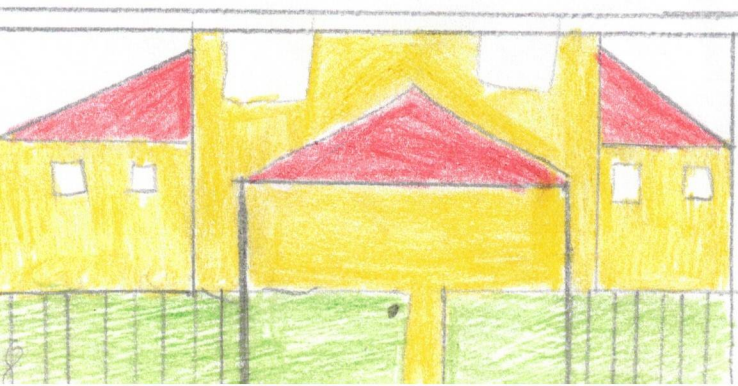
S

Rješenje: 

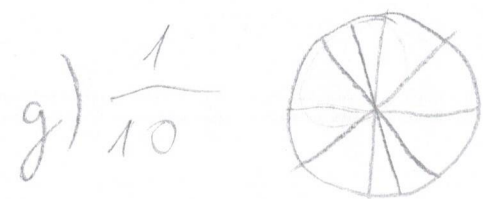
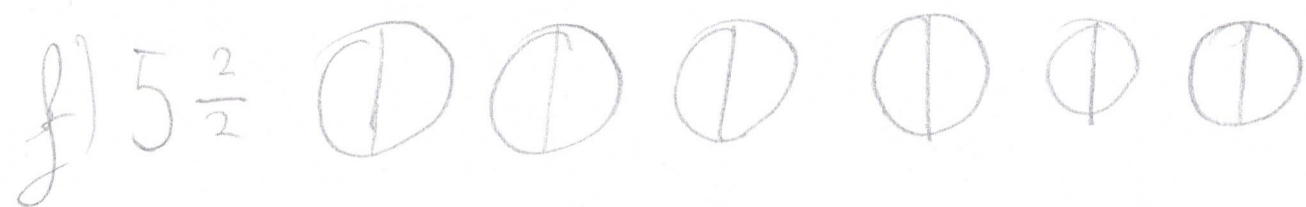
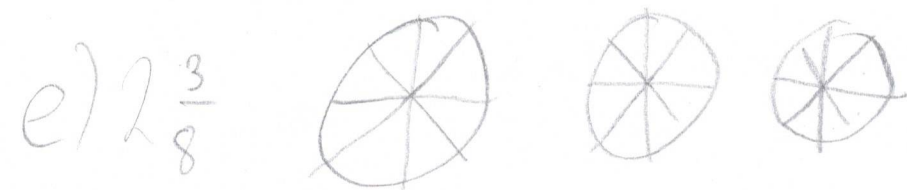
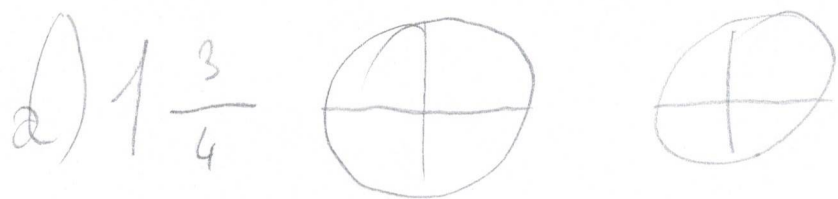
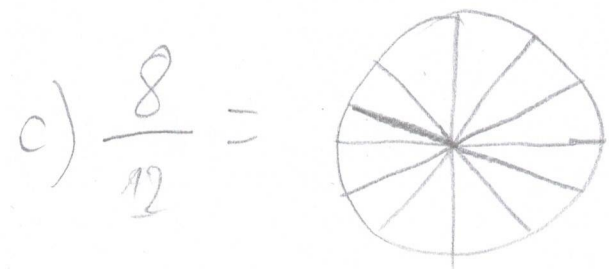
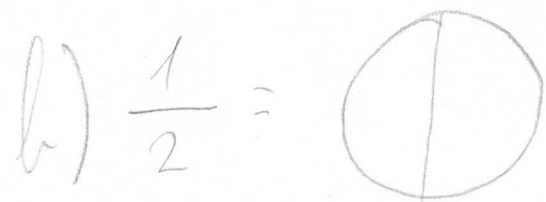
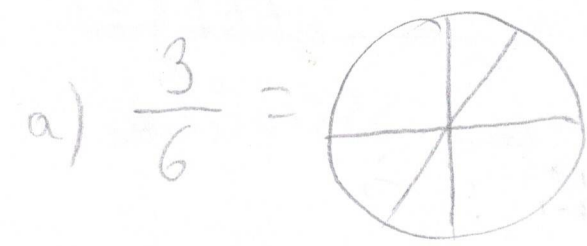
1.	2.	3.	4.	5.



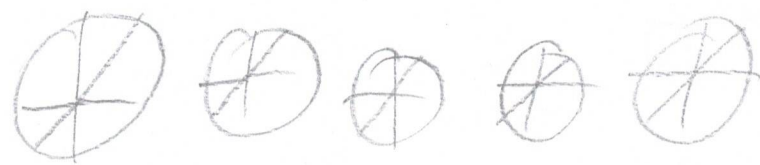
9. U jednoj školi na svijetsti don živalinija učenici su donijeli svoje kućne ljubimce u školu.  $\frac{5}{7}$  je donelo mačka,  $\frac{1}{5}$  je donelo papiga,  $\frac{2}{3}$  je donelo kornjake, a ostatak hrčake. Koliko je učenika donelo hrčake ako u školi ima 350 učenika?



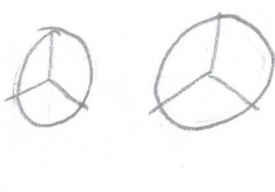
0. Pomozite Irmužu objasniti odgojenjujući broj  
djelova da se podudara s brojem.

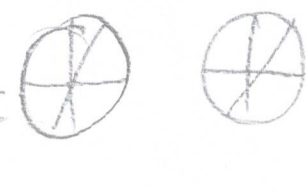


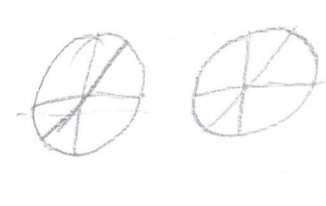
1. Ako je ponovo treba pomoć. Pomoz mi dojeti  
riješeno.

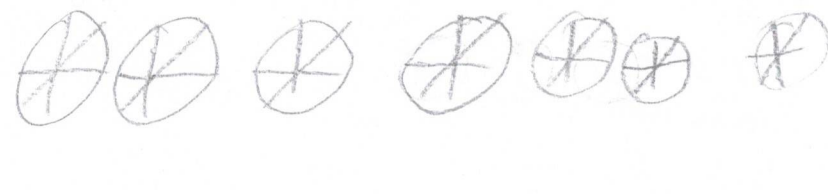
a)  $\frac{2}{6} + \frac{8}{2} =$  

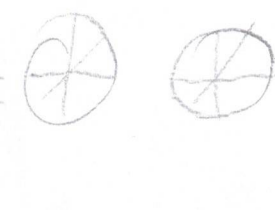
b)  $\frac{7}{2} - \frac{2}{3} =$  

c)  $\frac{6}{4} \cdot \frac{8}{9} =$  

d)  $\frac{5}{6} : \frac{6}{12} =$  

e)  $\frac{\frac{3}{2}}{\frac{2}{\frac{3}{3}}} =$  

f)  $\frac{17}{2} - \frac{17}{3} =$  

g)  $\frac{10}{8} : \frac{4}{6} =$  

gjeske.

$$a) \frac{1}{2} + \frac{3}{8} = \frac{4}{10}$$

$$b) \frac{6}{12} + \frac{3}{8} = \frac{9}{20}$$

$$c) \frac{3}{5} - \frac{1}{2} = \frac{1}{3}$$

$$d) \frac{8}{20} - \frac{2}{10} = \frac{6}{10}$$

$$e) \frac{4}{2} \cdot \frac{6}{8} = \frac{24}{16}$$

$$f) \frac{\frac{6}{5}}{\frac{5}{3}} = \frac{9}{10}$$

$$g) \frac{12}{6} \cdot \frac{2}{3} = \frac{6}{2}$$

$$h) \frac{\frac{9}{6}}{\frac{5}{8}} = \frac{14}{11}$$



Rjesenje:

1.

$$\frac{3}{4} + \frac{4}{6} = \frac{9}{12} + \frac{8}{12} = \frac{17}{12} = 1\frac{5}{12}$$

Tejedno su pojeli  $1\frac{5}{12}$ .

$$2 - 1\frac{5}{12} = \frac{24}{12} - \frac{17}{12} = \frac{7}{12}$$

Mami je ostalo  $\frac{7}{12}$ .

2.

$$\text{I. dan} = \frac{8}{5}$$

$$\text{II. dan} = \frac{3}{8}$$

$$4\frac{7}{9} - \left(\frac{4}{2} + \frac{9}{5}\right) = \frac{43}{9} - \left(\frac{20}{10} + \frac{18}{10}\right) =$$

$$= \frac{43}{9} - \frac{38}{10} = \frac{430}{90} - \frac{342}{90} = \frac{88}{90} = \frac{44}{45}$$

$$\text{Sve ukupno} = 3\frac{7}{9}$$

Treci je dan ishranio  $\frac{44}{45}$  podataka.

3.

$$a) \frac{3}{5} + \frac{8}{6} = \frac{18}{30} + \frac{40}{30} = \frac{58}{30} = 1\frac{29}{15}$$

$$b) \frac{8}{4} - \frac{2}{3} = \frac{24}{12} - \frac{8}{12} = \frac{16}{12} = \frac{4}{3}$$

$$c) \frac{6}{2} \cdot \frac{2}{1} = \frac{6}{1} = 6$$

$$d) \frac{12}{10} : \frac{6}{5} = \frac{12}{10} \cdot \frac{5}{6} = \frac{2}{2} = 1$$

$$e) \frac{8}{12} = \frac{8 \cdot 6}{12 \cdot 6} = \frac{8}{14} = \frac{4}{7}$$

$$f) \frac{6}{10} + \frac{2}{5} = \frac{3}{10} + \frac{4}{10} = \frac{7}{10}$$

$$g) \frac{9}{6} - \frac{3}{8} = \frac{36}{24} - \frac{9}{24} = \frac{27}{24} = 1\frac{3}{8} = 1\frac{1}{8}$$

$$h) \frac{12}{14} \cdot \frac{7}{8} = \frac{2}{2} = 1$$

$$i) \frac{3}{6} \cdot \frac{9}{2} = \frac{3}{2} \cdot \frac{3}{2} = \frac{9}{4}$$

$$j) \frac{4}{5} = \frac{1 \cdot 10}{5 \cdot 2} = \frac{2}{2} = 1$$

$$2) \frac{8}{14} - \frac{7}{14} = \frac{8}{14} - \frac{7}{14} = \frac{1}{14} = \frac{1}{14}$$

$$1) \frac{12}{8} + \frac{8}{3} = \frac{36}{24} + \frac{64}{24} = \frac{100}{24} = 4 \frac{4}{24}$$

4.

$$\frac{\frac{8}{2}}{\frac{5}{6}}$$

$$\frac{8}{12} + \frac{7}{3}$$

$$\frac{1}{4} \cdot \frac{14}{6}$$

$$\frac{3}{28}$$

$$3$$

$$\frac{3}{10}$$

$$\frac{\frac{8}{2}}{\frac{5}{6}} = \frac{2 \cdot 6^3}{8 \cdot 5} = \frac{6^3}{20} = \frac{3}{10}$$

$$\frac{1}{4} \cdot \frac{14}{6} = \frac{1}{4} \cdot \frac{7}{3} = \frac{7}{12}$$

$$\frac{8}{12} + \frac{7}{3} = \frac{8}{12} + \frac{28}{12} = \frac{36}{12} = 3$$

$$200 : 4 = 50$$

$$5. \quad 200 - \left( \frac{50}{\frac{200}{1} \cdot \frac{2}{4}} \right) + \left( \frac{100}{1} \cdot \frac{1}{2} \right) = 200 - [100 + 100] = 200 - 200 = 0$$

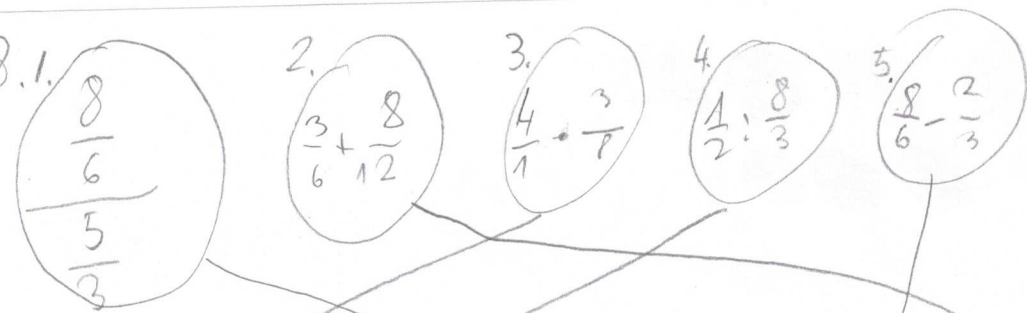
Mami nije ostalo ništa.

$$6. \quad 1 \frac{4}{12} + \frac{3}{8} = \frac{16}{12} + \frac{3}{8} = \frac{32}{24} + \frac{9}{24} = \frac{41}{24} = 1 \frac{17}{24}$$

$$4. \quad 40 - \left[ \left( \frac{40}{1} \cdot \frac{2}{5} \right) + \left( \frac{40}{1} \cdot \frac{1}{8} \right) \right] = 40 - [16 + 5] = 40 - 21 = 19$$

Noni je ostalo 19 kn, imala je dovoljno za čips.

12.



$$1\frac{1}{2}$$

K

$$\frac{3}{16}$$

R

$$\frac{4}{5}$$

U

$$\frac{1}{3}$$

S

$$1\frac{1}{6}$$

J

Rijesenje: 

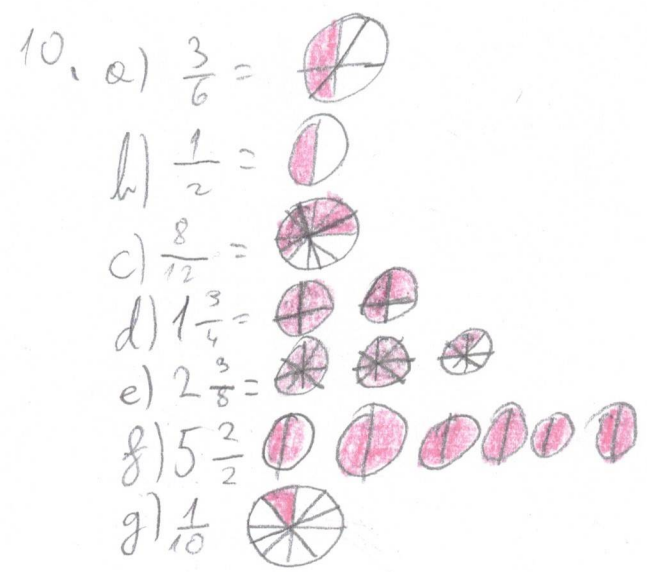
1.	2.	3.	4.	5.
U	S	K	R	J

1.  $\frac{8}{6} = \frac{8 \cdot 3^1}{6 \cdot 3^1} = \frac{8^4}{6 \cdot 3} = \frac{8^4}{18} = \frac{4}{5}$ , 2.  $\frac{3}{6} + \frac{8}{12} = \frac{6}{12} + \frac{8}{12} = \frac{14}{12} = 1\frac{1}{3}$   
 3.  $\frac{4}{1} \cdot \frac{3}{8} = \frac{3}{2} = 1\frac{1}{2}$ , 4.  $\frac{1}{2} : \frac{8}{3} = \frac{1}{2} \cdot \frac{3}{8} = \frac{3}{16}$ , 5.  $\frac{8}{6} - \frac{2}{3} = \frac{8}{6} - \frac{4}{6} = \frac{4}{6} = \frac{2}{3}$

350 uč  
 $350 - \left[ \left( \frac{350}{1} \cdot \frac{3}{4} \right) + \left( \frac{350}{1} \cdot \frac{1}{4} \right) + \left( \frac{350}{1} + \frac{2}{1} \right) \right] = 350 - [150 + 50 + 10] = 350 - 300 = 50$

50 učenika je donigelo hrčka.

$\frac{2}{5}$  komorce  
 ostatak hrčka



$$a) \frac{3}{6} + \frac{8}{2} = \text{5 circles (4 fully shaded, 1 half-shaded)}$$

$$b) \frac{7}{2} - \frac{2}{3} = \text{5 circles (4 fully shaded, 1 half-shaded)}$$

$$c) \frac{8^2}{4^1} \cdot \frac{8^2}{8^3} = \text{2 circles (1 fully shaded, 1 half-shaded)}$$

$$d) \frac{5}{6} : \frac{6}{12} = \text{2 circles (1 fully shaded, 1 half-shaded)}$$

$$e) \frac{3}{2} = \text{2 circles (1 fully shaded, 1 half-shaded)}$$

$$f) \frac{17}{2} - \frac{4}{3} = \text{7 circles (6 fully shaded, 1 half-shaded)}$$

$$g) \frac{10}{9} : \frac{4}{6} = \text{2 circles (1 fully shaded, 1 half-shaded)}$$

$$12. a) \frac{1}{2} + \frac{3}{8} = \frac{4}{8} + \frac{3}{8} = \frac{7}{8} = 1 \frac{3}{8}$$

$$b) \frac{6}{12} + \frac{3}{8} = \frac{12}{24} + \frac{9}{24} = \frac{21}{24}$$

$$c) \frac{3}{5} - \frac{1}{2} = \frac{6}{10} - \frac{5}{10} = \frac{1}{10}$$

$$d) \frac{8}{20} - \frac{2}{10} = \frac{8}{20} - \frac{4}{20} = \frac{4}{20} = \frac{1}{5}$$

$$e) \frac{1}{2} \cdot \frac{3}{8} = \frac{3}{16}$$

$$f) \frac{6}{5} : \frac{3}{5} = \frac{6 \cdot 5}{5 \cdot 3} = \frac{18}{15} = \frac{6}{5}$$

$$g) \frac{12}{6} : \frac{2}{3} = \frac{12}{6} \cdot \frac{3}{2} = \frac{36}{12} = 3$$

$$h) \frac{9}{6} : \frac{5}{8} = \frac{9 \cdot 8}{6 \cdot 5} = \frac{72}{30} = 2 \frac{4}{5}$$